



## SUICIDE DATA FOR GRANDE PRAIRIE: 2004-2013

INJURY PREVENTION CENTRE

7 July 2015



# Suicide in Grande Prairie

## Introduction

Over 500 people die by suicide in Alberta every year. Over 75% of these deaths are men, most between the ages of 30-69.

The Injury Prevention Centre (IPC) and the Alberta Suicide Prevention Network created the *Keep Him Here* campaign, which coincides with World Suicide Prevention Day, held annually on September 10. This campaign encourages Albertans with middle-aged men in their lives to know the signs of suicide, start the conversation and reach out. Visit [www.KeepHimHere.ca](http://www.KeepHimHere.ca) for more information on the campaign.

IPC has created a series of reports to provide data at a local level to support communities participating in the *Keep Him Here* campaign and to aid in the planning of ongoing suicide prevention programs and initiatives.

The series of reports includes:

- Urban areas: Medicine Hat, Lethbridge, Red Deer, Grande Prairie and Fort McMurray.
- Rural areas: Rural South, Rural Calgary, Rural Central, Rural North, Remote West and Remote North.
- Metro areas: Greater Calgary and Greater Edmonton.

Each report contains:

- 10-year trend data for the specified geographic region and for comparison, trend data for similar geographical areas (urban, rural or metro) and the provincial trend.
- 3-year rates and 3-year average numbers for suicide deaths, hospital admissions and emergency department visits to allow partners to compare the suicide risks across gender and age groups within the specified geographic area.

The geographic areas reported are as specific as possible without comprising patients' anonymity.

The information in this summary is based on unpublished surveillance data housed at IPC. Contact our office for more information about the data or the *Keep Him Here* campaign.

Injury Prevention Centre  
School of Public Health  
University of Alberta  
4075 RTF, 8308-114 Street  
Edmonton, Alberta T6G 2E1  
Phone: 780-492-6019  
Fax: 780-492-7154  
Website: [www.injurypreventioncentre.ca](http://www.injurypreventioncentre.ca)  
Email: [ipc@ualberta.ca](mailto:ipc@ualberta.ca)

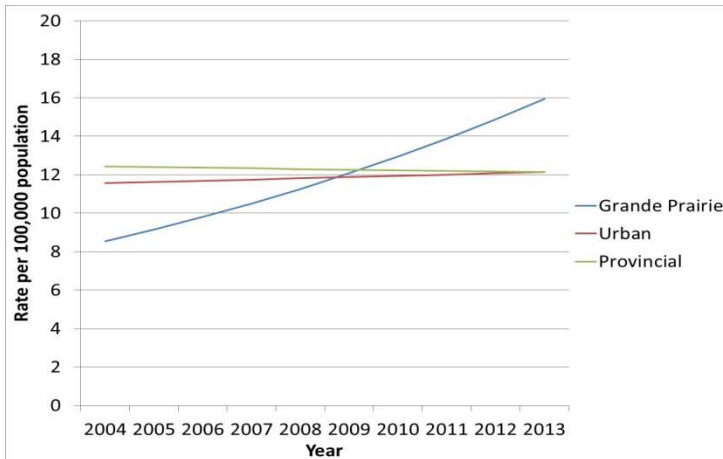
Suggested Citation: Injury Prevention Centre. Suicide Data for Grande Prairie, 2004-2013. Edmonton: Injury Prevention Centre; 2015.

Source: Injury Prevention Centre, Edmonton: Database held by Injury Prevention Centre (data accessed May 2015 database). Unpublished data available upon request.



# Suicide in Grande Prairie

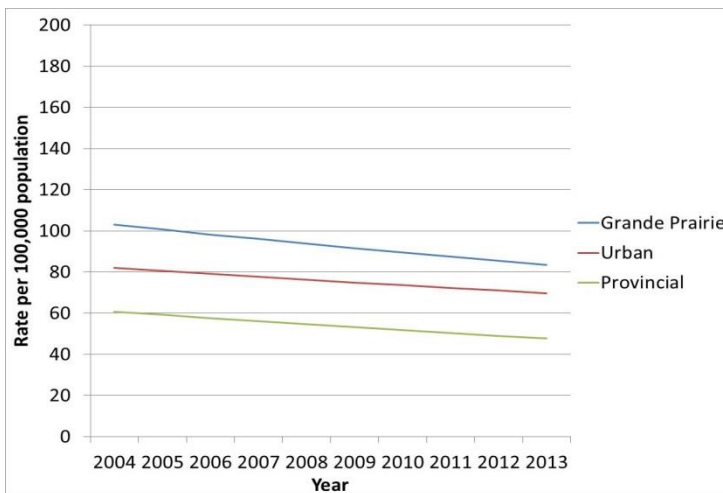
## Suicide Deaths Time Trend for Grande Prairie, the urban area and Alberta, 2004-2013



From 2004 to 2013, the suicide death rate in Alberta decreased at an average of 0.3 per cent per year.

During the same time period, the suicide death rate in Grande Prairie and the urban area increased, with an average increase of 7.2 per cent and 0.6 per cent per year, respectively.

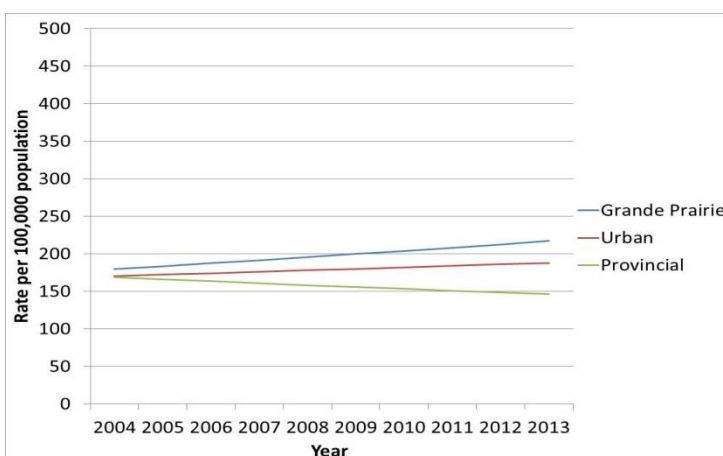
## Attempted Suicide and Self-inflicted Injury Hospital Admissions Time Trend for Grande Prairie, the urban area and Alberta, 2004-2013



Between 2004 and 2013, the province experienced a decrease in the rate of hospital admissions related to attempted suicide and self-inflicted injuries, with an average decrease of 2.7 per cent per year.

Grande Prairie experienced a decrease in the rate of hospital admissions, with an average decrease of 2.3 per cent per year. In the urban area, the rate of hospital admissions decreased at an average of 1.8 per cent per year.

## Attempted Suicide and Self-inflicted Injury Emergency Department Visits Time Trend for Grande Prairie, the urban area and Alberta, 2004-2013



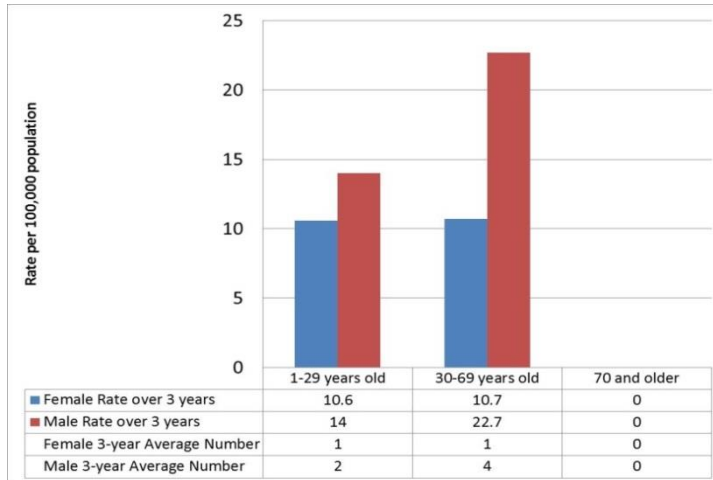
From 2004 to 2013, the rate of emergency department visits due to attempted suicide and self-inflicted injuries in the province decreased at an average of 1.6 per cent per year.

In contrast, the rates of emergency department visits in Grande Prairie and the urban area increased, with an average increase of 2.1 per cent and 1.1 per cent per year, respectively.



# Suicide in Grande Prairie

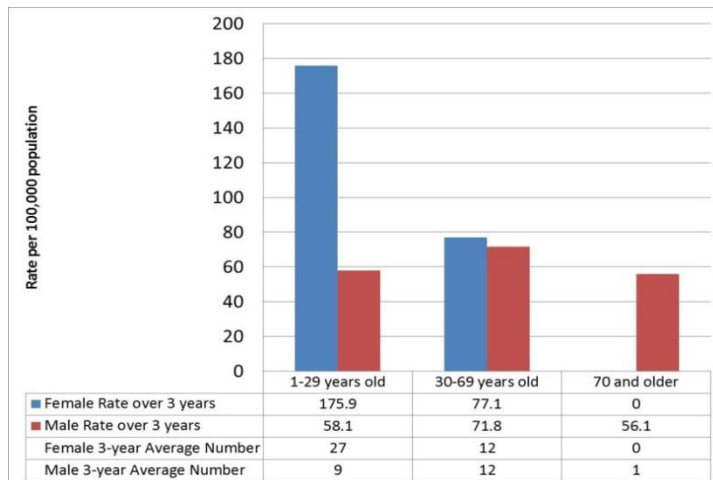
## Suicide Death Rates and Average Numbers of Suicide Deaths for Grande Prairie, 2011-2013



From 2011 to 2013, males aged 30-69 years had the highest suicide death rate in Grande Prairie, at 22.7 deaths per 100,000 population. Men under 30 years old had a suicide death rate of 14.0 deaths per 100,000 population and men aged 70 years and older had a rate of 0.0 deaths per 100,000 population.

In contrast, the suicide death rate among females in the 30-69 year old age group was 10.7 deaths per 100,000 population. Among females aged 1-29 years, the suicide death rate was 10.6 deaths per 100,000 population and among females aged 70 years and older, the suicide death rate was 0.0 deaths per 100,000 population.

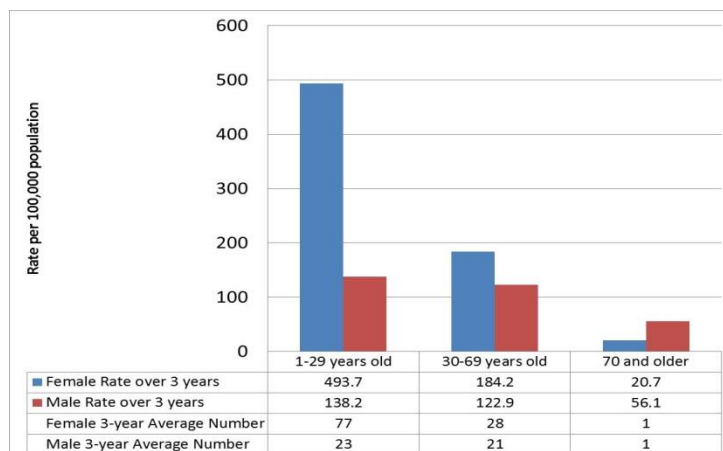
## Attempted Suicide and Self-inflicted Injury Hospital Admission Rates and Average Numbers of Hospital Admissions for Grande Prairie, 2011-2013



From 2011 to 2013, the rates of hospital admissions due to attempted suicide and self-inflicted injuries among females in Grande Prairie were 175.9 (1-29 years old), 77.1 (30-69 years old) and 0.0 (70 and older) hospital admissions per 100,000 population.

In comparison, the rates for male hospital admissions over the same time period were lower at 58.1 (1-29 years old) and 71.8 (30-69 years old) per 100,000 population. However, for males aged 70 years and older, the rate of hospital admissions was at 56.1 per 100,000 population.

## Attempted Suicide and Self-inflicted Injury Emergency Department Visit Rates and Average Numbers of Emergency Department Visits for Grande Prairie, 2011-2013



From 2011 to 2013, the rates of emergency department visits due to attempted suicide and self-inflicted injuries among females was 493.7 (1-29 years old), 184.2 (30-69 years old) and 20.7 (70 years and older) emergency department visits per 100,000 population.

In comparison, males had rates of 138.2 (1-29 years old), 122.9 (30-69 years old) and 56.1 (70 years and older) emergency department visits per 100,000 population.



## Suicide in Grande Prairie

**The 3-year (2011-2013) rates<sup>1</sup> of death, hospital admissions and emergency department visits for suicides, suicide attempts and self-inflicted injuries by age and sex, Grande Prairie**

Age Group	Death			Hospital Admissions			Emergency Department Visits		
	Male	Female	Total	Male	Female	Total	Male	Female	Total
<1	0.00	0.00	0.00	0.00	0.00	0.00	0.00	0.00	0.00
1-4	0.00	0.00	0.00	0.00	0.00	0.00	0.00	0.00	0.00
5-9	0.00	0.00	0.00	0.00	0.00	0.00	0.00	0.00	0.00
10-14	16.18	0.00	8.27	32.36	270.32	148.77	32.36	675.79	347.14
15-19	14.71	45.61	29.90	220.65	304.04	261.64	353.05	1033.75	687.75
20-24	43.37	11.22	27.57	65.06	370.25	215.05	336.15	998.54	661.70
25-29	8.04	9.13	8.55	48.21	127.85	85.49	96.42	328.77	205.18
30-34	9.00	0.00	4.87	71.96	95.52	82.78	161.91	286.56	219.12
35-39	0.00	0.00	0.00	78.67	66.97	73.33	146.10	200.91	171.11
40-44	40.84	30.49	35.96	108.92	91.48	100.69	149.76	198.20	172.61
45-49	27.48	0.00	14.43	27.48	75.95	50.50	96.18	151.91	122.64
50-54	27.91	30.99	29.37	97.67	92.97	95.45	139.53	216.92	176.21
55-59	18.16	0.00	9.65	72.63	41.22	57.92	72.63	61.83	67.57
60-64	86.86	0.00	44.60	57.90	61.09	59.46	57.90	91.63	74.33
65-69	0.00	47.98	23.66	0.00	47.98	23.66	0.00	47.98	23.66
70-74	0.00	0.00	0.00	145.56	0.00	69.25	145.56	65.96	103.88
75-79	0.00	0.00	0.00	0.00	0.00	0.00	0.00	0.00	0.00
80-84	0.00	0.00	0.00	0.00	0.00	0.00	0.00	0.00	0.00
85-89	0.00	0.00	0.00	0.00	0.00	0.00	0.00	0.00	0.00
90+	0.00	0.00	0.00	0.00	0.00	0.00	0.00	0.00	0.00

1. Rates per 100,000 population.





#### Funding and Support

The Injury Prevention Centre receives core business funding from Alberta Health and is part of the School of Public Health at the University of Alberta.

Injury Prevention Centre  
School of Public Health, University of Alberta  
4075 RTF, 8308 114 St NW  
Edmonton AB T6G 2E1  
Phone 780.492.6019  
Fax 780.492.7154  
ipc@ualberta.ca

[injurypreventioncentre.ca](http://injurypreventioncentre.ca)