

Remote North

SUICIDE DATA FOR ALBERTA'S REMOTE NORTH: 2004-2013 INJURY PREVENTION CENTRE

7 July 2015



Suicide in Alberta's Remote North

Introduction

Over 500 people die by suicide in Alberta every year. Over 75% of these deaths are men, most between the ages of 30-69.

The Injury Prevention Centre (IPC) and the Alberta Suicide Prevention Network created the *Keep Him Here* campaign, which coincides with World Suicide Prevention Day, held annually on September 10. This campaign encourages Albertans with middle-aged men in their lives to know the signs of suicide, start the conversation and reach out. Visit www.KeepHimHere.ca for more information on the campaign.

IPC has created a series of reports to provide data at a local level to support communities participating in the *Keep Him Here* campaign and to aid in the planning of ongoing suicide prevention programs and initiatives.

The series of reports includes:

- Urban areas: Medicine Hat, Lethbridge, Red Deer, Grande Prairie and Fort McMurray.
- Rural areas: Rural South, Rural Calgary, Rural Central, Rural North, Remote West and Remote North.
- Metro areas: Greater Calgary and Greater Edmonton.

Each report contains:

- 10-year trend data for the specified geographic region and for comparison, trend data for similar geographical areas (urban, rural or metro) and the provincial trend.
- 3-year rates and 3-year average numbers for suicide deaths, hospital admissions and emergency department visits to allow partners to compare the suicide risks across gender and age groups within the specified geographic area.

The geographic areas reported are as specific as possible without comprising patients' anonymity.

The information in this summary is based on unpublished surveillance data housed at IPC. Contact our office for more information about the data or the *Keep Him Here* campaign.

Injury Prevention Centre
School of Public Health
University of Alberta
4075 RTF, 8308-114 Street
Edmonton, Alberta T6G 2E1
Phone: 780-492-6019
Fax: 780-492-7154
Website: www.injurypreventioncentre.ca
Email: ipc@ualberta.ca

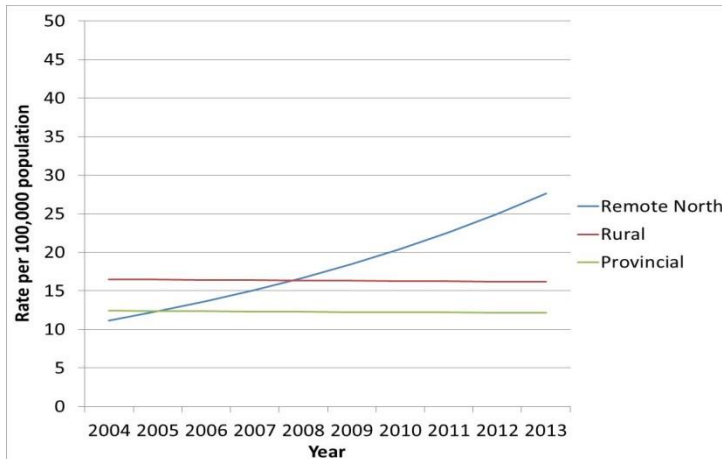
Suggested Citation: Injury Prevention Centre. Suicide Data for Alberta's Remote North, 2004-2013. Edmonton: Injury Prevention Centre; 2015.

Source: Injury Prevention Centre, Edmonton: Database held by Injury Prevention Centre (data accessed May 2015 database). Unpublished data available upon request.



Suicide in Alberta's Remote North

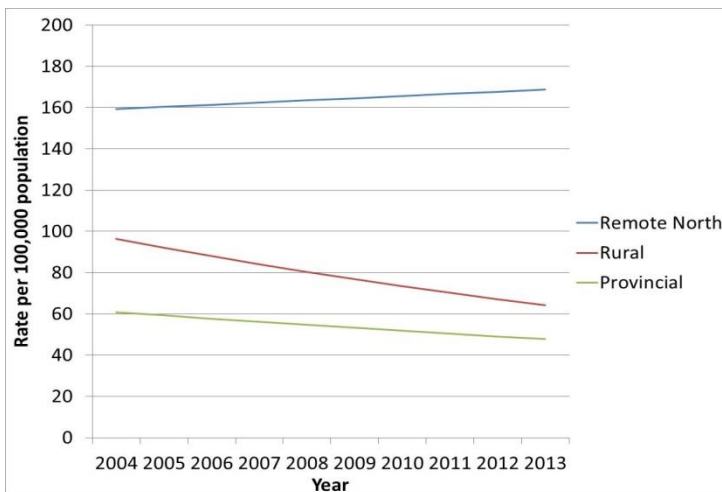
Suicide Deaths Time Trends for Remote North, the rural area and Alberta, 2004-2013



From 2004 to 2013, the suicide death rate in Alberta decreased at an average of 0.3 per cent per year.

During the same time period, the suicide death rate in the Remote North increased at an average of 10.6 per cent per year. In the rural area, the suicide death rate decreased at an average of 0.2 per cent per year.

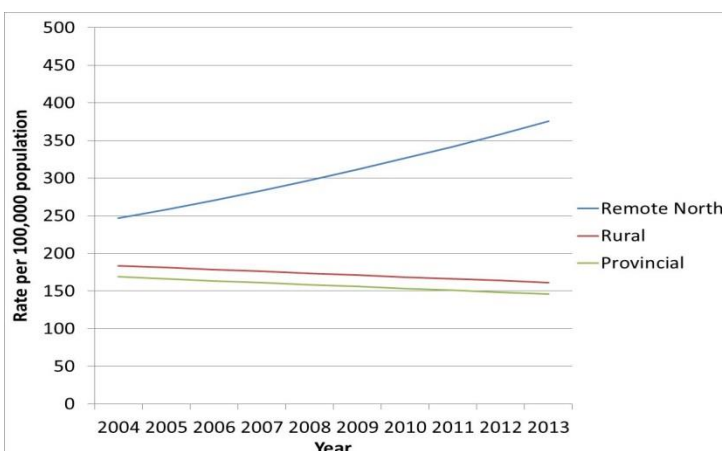
Attempted Suicide and Self-inflicted Injury Hospital Admissions Time Trends for Remote North, the rural area and Alberta, 2004-2013



Between 2004 and 2013, the province experienced a decrease in the rate of hospital admissions related to attempted suicide and self-inflicted injuries, with an average decrease of 2.7 per cent per year.

Remote North experienced an increase in the rate of hospital admissions, with an average increase of 0.6 per cent per year. In the rural area, the rate of hospital admissions decreased at an average of 4.4 per cent per year.

Attempted Suicide and Self-inflicted Injury Emergency Department Visits Time Trends for Remote North, the rural area and Alberta, 2004-2013



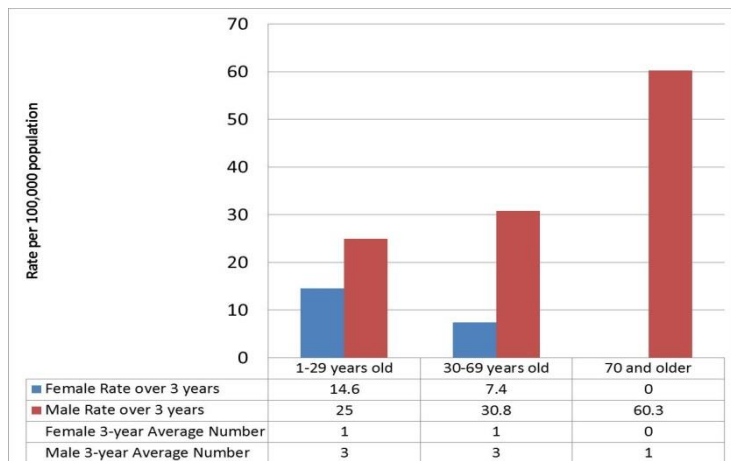
From 2004 to 2013, the rate of emergency department visits due to attempted suicide and self-inflicted injuries in the province decreased at an average of 1.6 per cent per year.

In contrast, the rate of emergency department visits in Remote North increased at an average of 4.8 per cent per year. In the rural area, the rate decreased at an average of 1.4 per cent per year.



Suicide in Alberta's Remote North

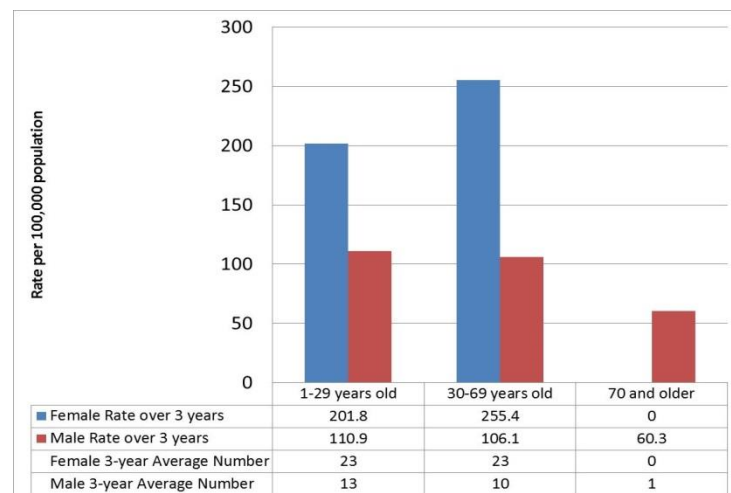
Suicide Death Rates and Average Numbers of Suicide Deaths for Remote North, 2011-2013



From 2011 to 2013, males aged 70 years and older had the highest suicide death rate in Remote North, at 60.3 deaths per 100,000 population. Men under 30 years of age had a suicide death rate of 25.0 deaths per 100,000 population and men aged 30-69 years had a rate of 30.8 deaths per 100,000 population.

In contrast, the suicide death rate among females in the 30-69 year age group was 7.4 deaths per 100,000 population. Among females aged 1-29 years, the suicide death rate was 14.6 deaths per 100,000 population and among females aged 70 years and older, the suicide death rate was 0.0 deaths per 100,000 population.

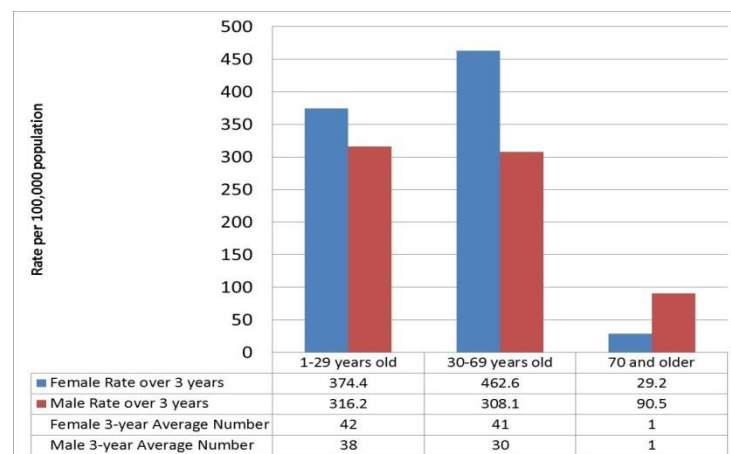
Attempted Suicide and Self-inflicted Injury Hospital Admission Rates and Average Numbers of Hospital Admissions for Remote North, 2011-2013



From 2011 to 2013, the rates of hospital admissions due to attempted suicide and self-inflicted injuries among females in Remote North were 201.8 (1-29 years old), 255.4 (30-69 years old) and 0.0 (70 years and older) hospital admissions per 100,000 population.

In comparison, the rates for male hospital admission over the same time period was 110.9 (1-29 years old), 106.1 (30-69 years old) and 60.3 (70 years and older) per 100,000 population.

Attempted Suicide and Self-inflicted Injury Emergency Department Visit Rates and Average Numbers of Emergency Department Visits for Remote North, 2011-2013



From 2011 to 2013, the rates of emergency department visits due to attempted suicide and self-inflicted injuries among females was 374.4 (1-29 years old), 462.6 (30-69 years old) and 29.2 (70 years and older) emergency department visits per 100,000 population.

In comparison, males had rates of 316.2 (1-29 years old), 308.1 (30-69 years old) and 90.5 (70 years and older) emergency department visits per 100,000 population.



Suicide in Alberta's Remote North

The 3-year (2011-2013) rates¹ of death, hospital admissions and emergency department visits for suicides, suicide attempts and self-inflicted injuries by age and sex, Remote North

Age Group	Death			Hospital Admissions			Emergency Department Visits		
	Male	Female	Total	Male	Female	Total	Male	Female	Total
<1	0.00	0.00	0.00	0.00	0.00	0.00	0.00	0.00	0.00
1-4	0.00	0.00	0.00	0.00	0.00	0.00	0.00	0.00	0.00
5-9	0.00	0.00	0.00	0.00	0.00	0.00	16.44	0.00	8.23
10-14	16.47	18.36	17.36	16.47	128.49	69.44	65.89	330.40	190.96
15-19	48.08	52.09	50.01	224.39	451.47	333.39	560.99	711.93	633.44
20-24	53.44	19.35	37.10	285.00	348.36	315.37	570.00	619.31	593.64
25-29	40.06	0.00	19.95	180.25	357.71	269.33	841.18	735.29	788.03
30-34	44.76	0.00	21.89	111.91	407.03	262.7	470.01	814.05	645.80
35-39	23.01	23.70	23.35	92.04	331.83	210.16	414.17	592.56	502.04
40-44	23.53	25.44	24.45	188.24	356.14	268.95	423.53	585.09	501.22
45-49	22.64	0.00	12.15	158.48	183.53	170.09	362.24	340.85	352.33
50-54	96.6	0.00	51.35	24.15	274.12	141.21	96.60	493.42	282.41
55-59	0.00	0.00	0.00	60.46	104.06	80.76	120.92	173.43	145.37
60-64	0.00	0.00	0.00	161.49	91.20	128.48	242.23	45.60	149.89
65-69	0.00	0.00	0.00	0.00	0.00	0.00	165.84	120.12	143.88
70-74	141.44	0.00	76.63	141.44	0.00	76.63	212.16	0.00	114.94
75-79	0.00	0.00	0.00	0.00	0.00	0.00	0.00	100.00	51.63
80-84	0.00	0.00	0.00	0.00	0.00	0.00	0.00	0.00	0.00
85-89	0.00	0.00	0.00	0.00	0.00	0.00	0.00	0.00	0.00
90+	0.00	0.00	0.00	0.00	0.00	0.00	0.00	0.00	0.00

1. Rates per 100,000 population.



Funding and Support

The Injury Prevention Centre receives core business funding from Alberta Health and is part of the School of Public Health at the University of Alberta.

Injury Prevention Centre
School of Public Health, University of Alberta
4075 RTF, 8308 114 St NW
Edmonton AB T6G 2E1
Phone 780.492.6019
Fax 780.492.7154
ipc@ualberta.ca

injurypreventioncentre.ca